

# Instructions to update your cmd\_key for MA3 to v2

## Bug Fixes and Compatibility

(1)

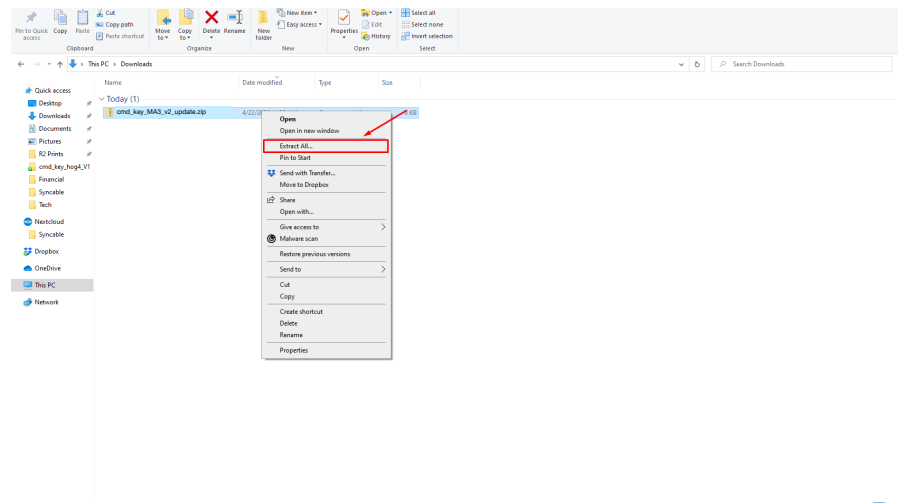
Download ZIP from Website

[www.cmd-key.com](http://www.cmd-key.com)

**cmd\_key\_MA3\_v2\_update.zip**

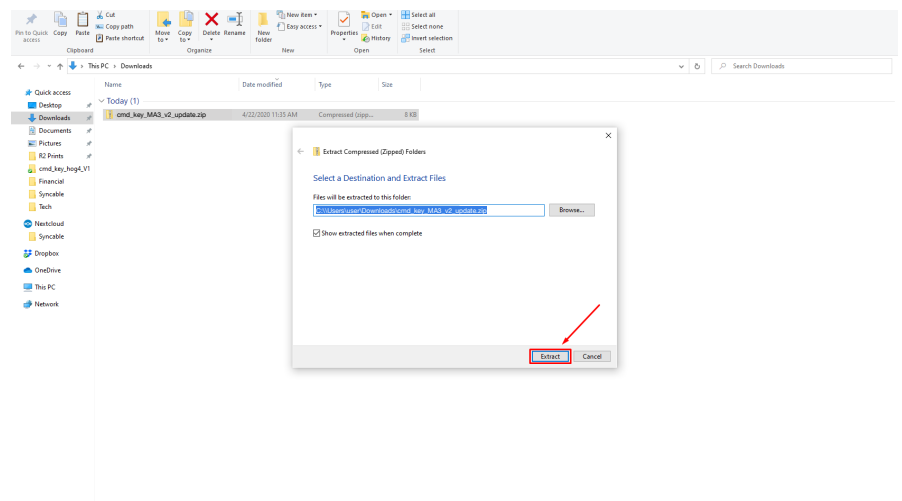
(2)

Right Click on Zip File and click  
extract all



(3)

Click Extract on bottom of  
window. Make sure the “Show  
extracted files when complete” is  
checked. If not, you will need to  
open the un-zipped folder  
manually.

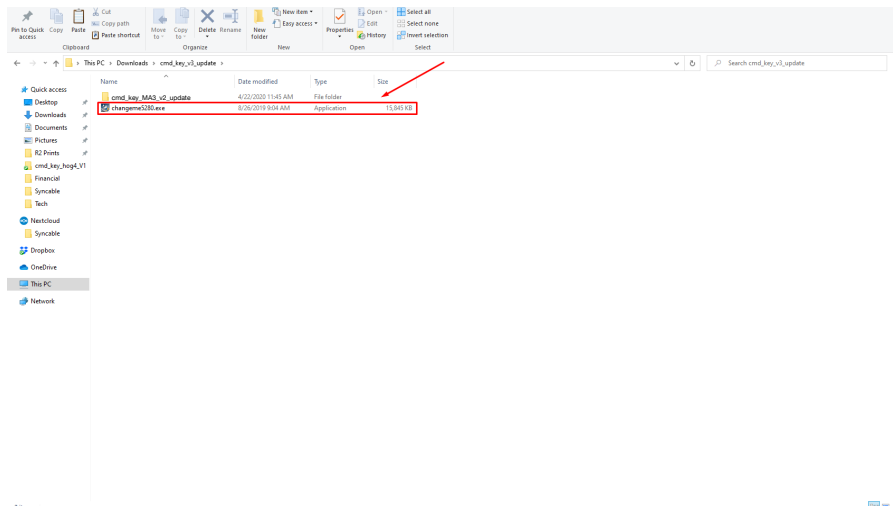


(4)

Click on Installer

Wait as the installation process proceeds, Click **next/install** as required

Restart computer when prompted



(5)

Re-open file location after reboot

(6)

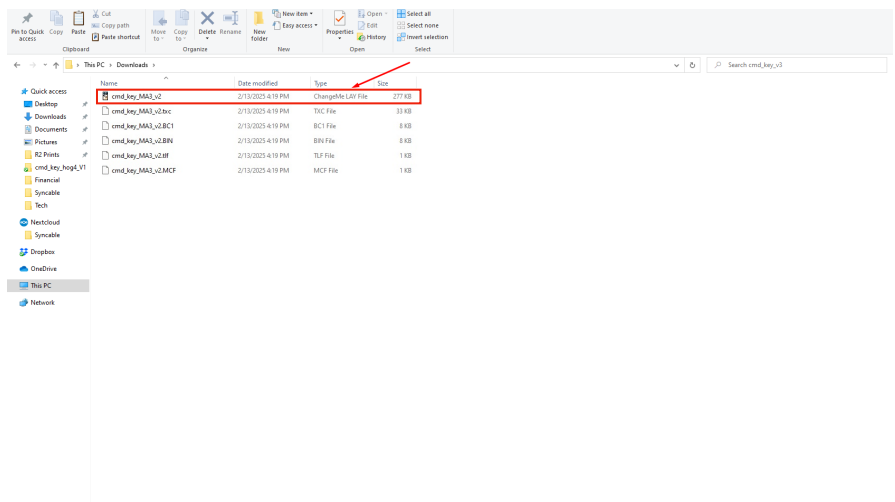
Plug in Keyboard (you must do this before step 7 or you cmd\_key might not be found by the update utility.)

(7)

Open **cmd\_key\_MA3\_v2** folder

(8)

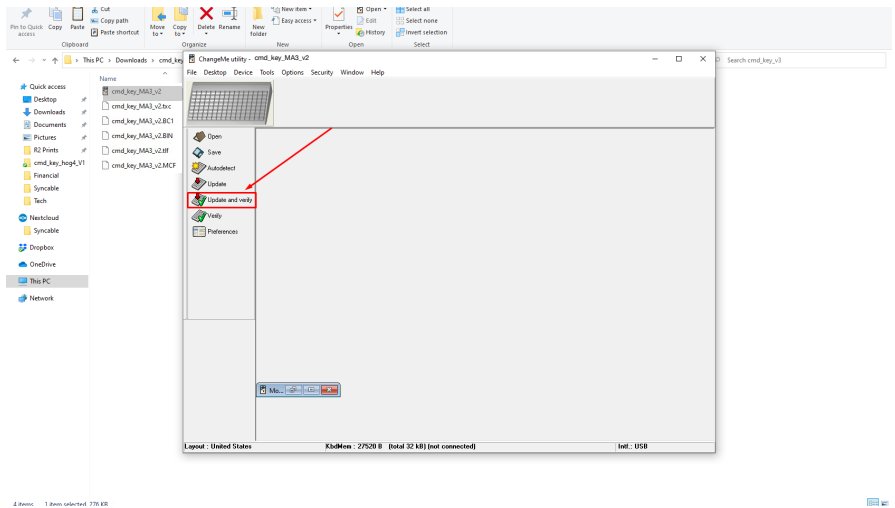
Select **cmd\_key\_MA3\_v2** file  
(cmd\_key\_MA3\_v2 ChangeMe LAY File)



(9)

In CHANGEME APP click **update & verify**

The installer will update your **cmd\_key**. Do not interrupt it any any point. It should take less than a few minutes.

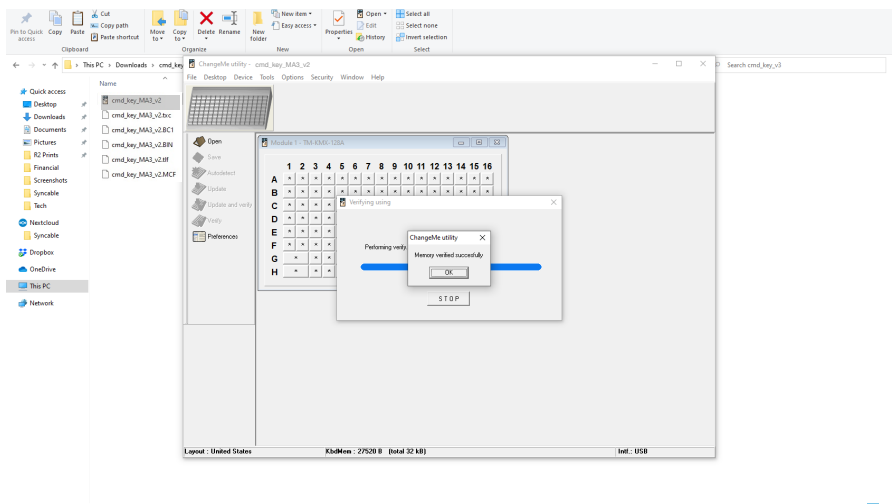


(10)

**Congratulations!!**

You have completed the updating process.

You can now close the CHANGEME APP and use your cmd\_key with MA3.



Please let us know if you had any issues or concerns.

MA3 does not have default shortcuts for X9-X16. You can either enter them manually in your show file config(shown below) or import our config file into your console. The shortcut config file is in the update folder **cmd\_key MA3v2 Shortcuts.xml**

#### cmd\_key X9-X16 shortcuts

**X9** = ALT+1   **X10** = ALT+2   **X11** = ALT+3   **X12** = ALT+4   **X13** = ALT+5   **X14** = ALT+6   **X15** = ALT+7   **X16** = ALT+8

If you would like to make your own custom shortcuts and re-program your cmd\_key, please download our instructions at [www.cmd-key.com/downloads](http://www.cmd-key.com/downloads)